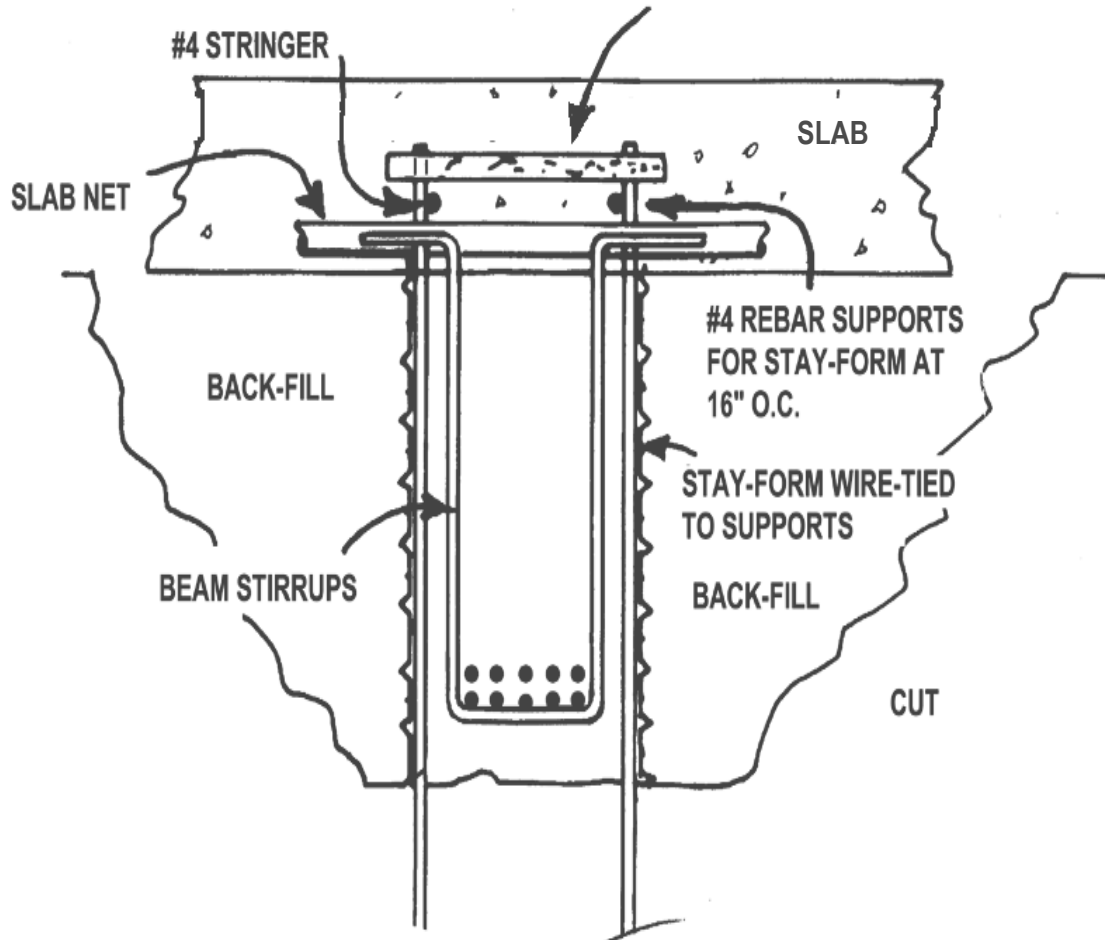


## GRADE BEAMS WITH STAY-FORM FOR BACK-FILLING BEFORE CONCRETE PLACEMENT

1" x 4" WOODEN YOKE DRILLED AT EACH END TO RECEIVE #4 REBAR STAY-FORM SUPPORT. SUPPORT TO BE REMOVED WHEN CONCRETE IS PLACED.



### ALTERNATE INSTALLATION

NOTE: See load table on page 3 for spacing and load information.  
It is preferable to orientate ribs into first pour.